

Most popular caliper design manufactured to exacting tolerances

Useful for inside and outside measurements, depth & step measurements

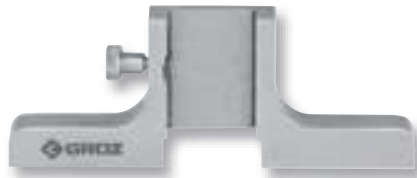
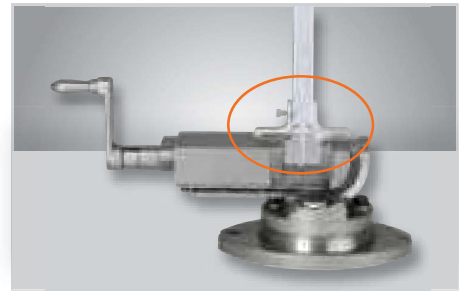
Hardened stainless steel construction in satin chrome finish

Vernier scale etched with permanent black graduations allows precise & convenient reading

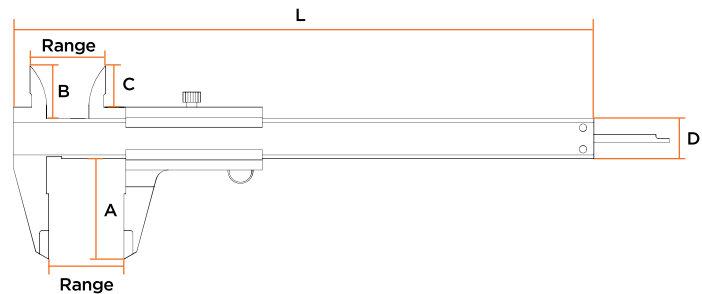
Free wheeling thumb roller mechanism for smooth movement along the linear scale

Convenient to use locking screw to set calipers at any desired position - a feature very useful in application requiring repetitive measurements

Extendible depth gauge for use in slots & small holes


VNC/8

DBA/3
Depth Base Attachment


Slide-on attachment connects to the depth end of the caliper providing a base for spanning holes
Suitable for use with manual, dial & digital calipers - 150mm (6") & 200 mm (8")

RESOLUTION
0.02 MM
(0.001")

ORDERING INFORMATION

CAT. NR.	RANGE		ACCURACY (MM)	L (MM)	A (MM)	B (MM)	C (MM)	D (MM)	BOX QTY.
	(MM)	(INCH)							
VNC/6	0 - 150	0 - 6	± 0.02	229.00	40.00	20.00	15.00	16.00	5
VNC/8	0 - 200	0 - 8	± 0.03	292.00	50.00	24.00	20.00	16.00	5
VNC/12	0 - 300	0 - 12	± 0.04	405.00	61.50	26.00	20.00	20.00	5
DBA/3	Depth Base Attachment								5